

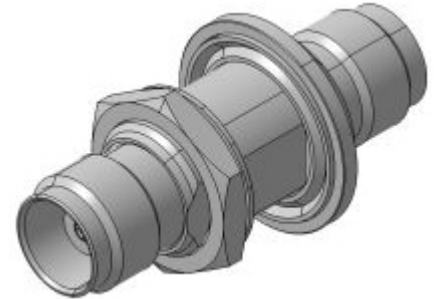
EMP Protector 3404.26.0002

Description

Miniature GDT technology

Benefits

DC continuity for remote powering
 The protector can also be installed reversely
 Fix installed GDT, static sparkover-voltage nom. 200 V
 Compliant to IEC 61643-21



Product Configuration

Main path connectors Port 1: unprotected, TNC jack (female) - Port 2: protected, TNC jack (female)
 Mounting and grounding MH4 (bulkhead mounting), brk (bracket)

Technical Data

Electrical Data

Impedance	50 Ω	
Frequency range	0 - 2000 MHz	0 - 1000 MHz
Return loss	≥ 16.5 dB	≥ 23.1 dB
Insertion loss	≤ 0.3 dB	≤ 0.15 dB
RF CW power	≤ 12 W	≤ 25 W
PIM 3rd order	not specified	not specified

Surge current handling capability 2.5 multiple kA (test pulse 8/20 μs)
 Residual pulse energy 250 μJ typically (test pulse 4 kV 1.2/50 μs / 2 kA 8/20 μs) main path - protected side

Mechanical Data

Number of matings 500
 Weight 28 g

Environmental Data

Operating temperature -40 °C to +85 °C
 Waterproof degree IP20 (according to IEC 60529, data refer to the coupled state)
 2011/65/EC (RoHS) compliant acc. Annex III

Material Data

Piece Parts	Material	Surface Plating
Housing	Brass	SUCOPLATE (R) Plating
Port 1 center contact	Copper Beryllium Alloy	Gold Plating (without Nickel underplating)
Port 2 center contact	Copper Beryllium Alloy	Gold Plating (without Nickel underplating)

Related Documents

Outline drawing DOU-00057114.1
 Mounting instruction DOC-0000176104

Remarks

- max power : DC= 50W
- current rating (DC) 2.5A
- insulation resistance min. (at 50V) 100MOhm
- DC sparkover voltage: 230V +- 20V
- impulse sparkover voltage: typ. <1500V (at 1kV/ns)