

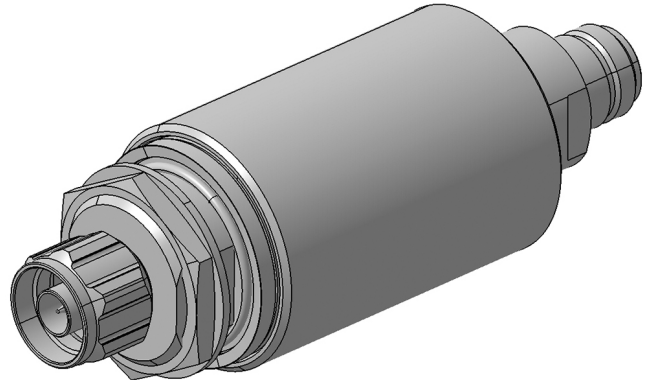
## High Voltage DC Block 9077.17.0034

### Description

Broadband HIGH VOLTAGE DC-DC Block

#### Benefits

Inner and outer conductor blocked (DC-DC Block)  
 Can also be installed reversely  
 Broadband operation  
 Grounding feature



### Product Configuration

Port 1 connector	N jack (female)
Port 2 connector	N plug (male), side of bulkhead
Mounting	MH110 (bulkhead mounting)

### Technical Data

#### Electrical Data

Impedance	50 $\Omega$	
Frequency Range	160 to 2500 MHz	300 to 2500 MHz
Return loss	$\geq 22$ dB	$\geq 26.44$ dB
Insertion loss	$\leq 0.1$ dB	$\leq 0.1$ dB
RF avg. power	$\leq 500$ W	$\leq 500$ W
RF peak power	$\leq 1000$ W	$\leq 1000$ W
PIM 3rd order	-150 dBc typ.	-150 dBc typ.
Blocking voltage center cond.	$\leq 4000$ VDC	
Blocking voltage outer cond.	$\leq 4000$ VDC	
Leakage current	$\leq 5$ $\mu$ A	

#### Mechanical Data

Weight	471 g
--------	-------

#### Environmental Data

Operating temperature	-40 °C to +85 °C
Waterproof degree	IP65

#### Material Data

Piece Parts	Material	Surface Plating
Housing	POM (Polyoxymethylene)	
Female center contact	Brass	Gold Plating (without Nickel underplating)

### Related Documents

Outline drawing	DOU-00105141.1
-----------------	----------------

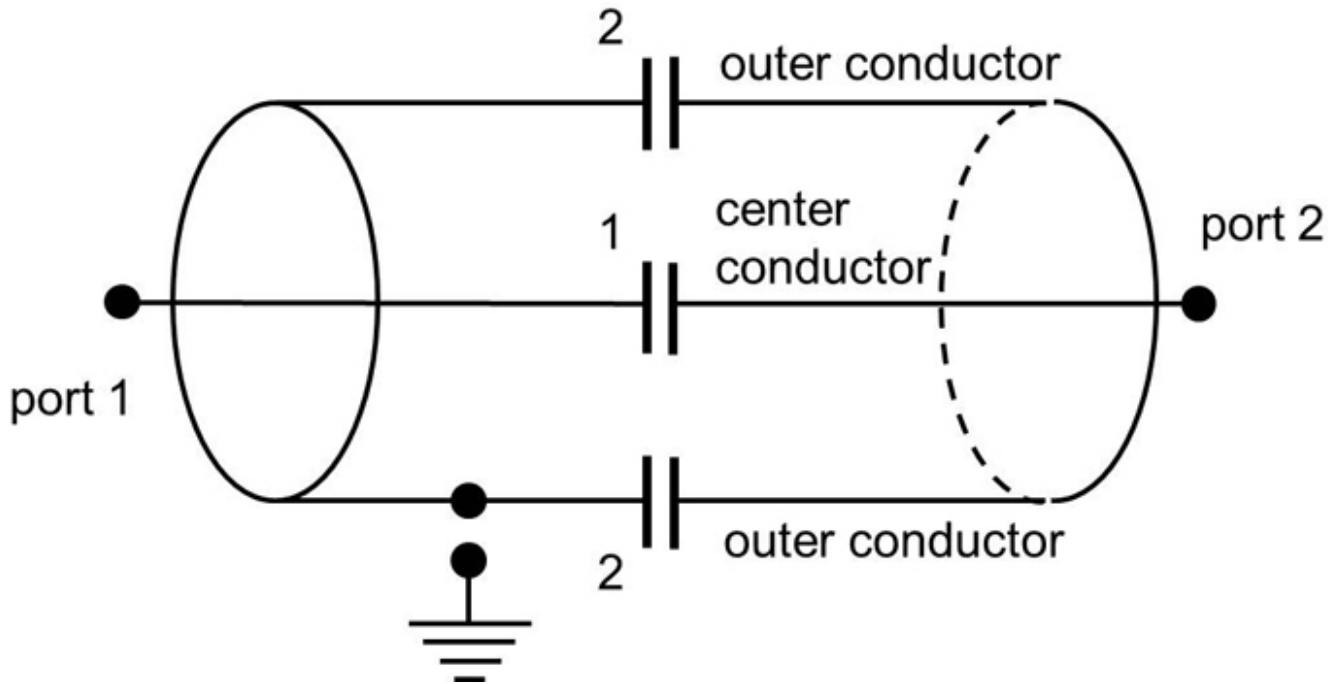
### Additional Information

#### Remarks

suitable mounting bracket 9075.99.0095

## High Voltage DC Block 9077.17.0034

Schematic diagram component circuit



1) Center block: Yes

2) Outer block: Yes

3) Port 1 short: No

4) Port 2 short: No