

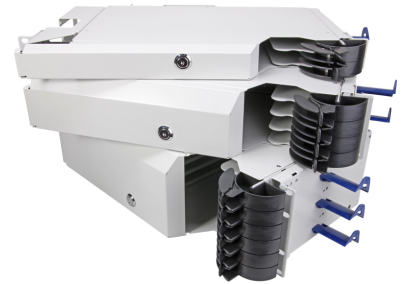
ODU - Optimised Distribution Unit

Description

ODU, for up to 2 fiber cassette, 1U, grey
 ODU2-1U-SPL-STA-GY

Features

- Integration of LISA fiber cassette supporting splicing solution
- Front-mounting allows the use in standard 19" equipment cabinets
- Each height unit accommodates 2 LISA fiber cassette
- Allows instant access to fiber cassette and its connectivity due to runner mechanism
- Integral service loop for patch cords
- Horizontal and vertical patch cord guides
- Integrated patch cord mandrels for bend-radius protection
- Patch cord retaining ring ensures safe strain relief of patch cords exiting the unit
- Lockable front door offer complete access security
- Flexible mounting points at the rear make cable glanding quick and easy



Technical data

Mechanical data

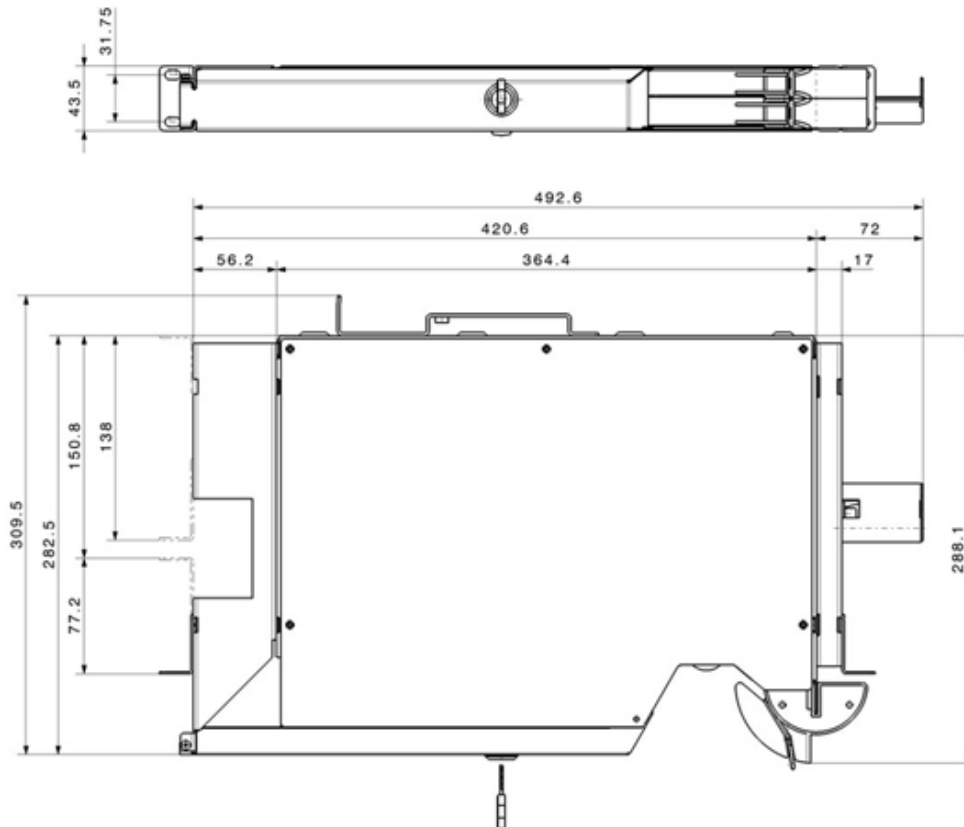
Characteristics	Values
Product family	LISA
Dimension (Width x Length x Height) (mm)	515 x 310 x 43.5
Dimension (Width x Length x Height) (inch)	20.3 x 12.2 x 1.7
Rack height (U)	1
Weight (kg)	3
Weight (lbs)	6.6
Material chassis	steel
Material mandrels frontside	ABS
Material mandrels rearside	HDPE
Colour chassis	light grey (RAL 7035)
Colour mandrels frontside	jet black (RAL 9005)
Colour mandrels rearside	gentian blue (RAL 5010)
Minimum bending radius (mm)	35
Capacity of modules (pcs)	2
Compatibility	EDR
Mounting Type	Front mounting

Environmental data

Characteristics	Values
Temperature resistance (min to max) (°C)	-40 to 70
Temperature resistance (min to max) (°F)	-40 to 158
Resistance to impact	IK03
Free of halogen	Yes
RoHS compliant	Yes
REACH compliant	Yes

ODU - Optimised Distribution Unit

Technical drawing



Ordering information

Description	Item number
ODU, for up to 2 fiber cassette, 1U, grey	84076616

Related Documents

Installation manual	DOC-0000399570
---------------------	----------------