

XCO - ruggedized exchangeable SFP Connector

Features:

- 2 fibers, singlemode or multimode
- Standard LC duplex interface
- Ruggedized outdoor connector for fiber-to-the-antenna and industrial applications
- Exchange and service of SFP module possible
- Easy manual installation - no tool required
- High installation safety due to reliable snap-in strain relief system (patent pending)
- Waterproof protection cap with pulling eye
- EMI protected
- RoHs compliant



Specifications

Characteristics	Conditions	Tested acc. To	Values
Technology			LC with full ceramic
Material housing			Nickel Plating Brass
Mechanical performance	Tensile load (N)	IEC 61300-2-4	≤500N
Mechanical performance	Static side load (N)	IEC61300-2-42	≤ 30N
Operation temperature 1)		IEC 61300-2-22	-40°C up to 85°C
Matings		IEC 61300-2-2	500 cycles 2)
IP Protection Class			IP 67
Salt mist Test		IEC 61300-2-26 / 720h	
Vibration Test		IEC 61300-2-1	
Shock Test		IEC 61300-2-9	

1) depending on cable type 2) with repeated cleaning

Optical performance

Characteristics	Conditions	Value 1	Value 2
Insertion loss	singlemode	typ. ≤ 0.2 dB	97% ≤ 0.45 dB
IEC 61300-3-34	multimode	typ. ≤ 0.2 dB	97% ≤ 0.5 dB
Return loss	singlemode	≥ 50 dB	

XCO - ruggedized exchangeable SFP Connector

Mating sequence



Remove protection cap and slide back connector housing



Snap connector into flange – full strain relief



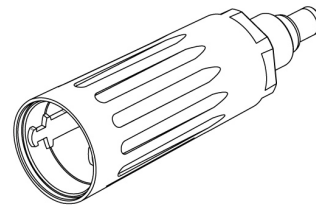
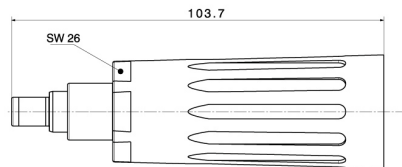
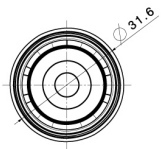
Remove LC dust caps and plug LC duplex connectors into SFP module



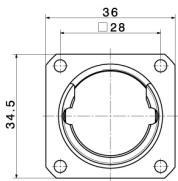
Screw-on housing to seal connector

Technical Drawing

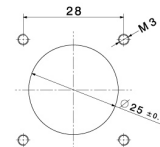
Type X1: XCO connector plug





Type: XCO build-in flange



hole pattern



Overview of types and dust caps

Type old	Type new	Dust cap	IP
X1		XCO connector 	IP 67
Item number 84074439		XCO build-in flange 	IP 67