

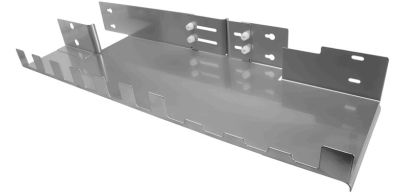
CDR09, 2U patch cord routing channel

Description

CDR09, 2U patch cord routing channel, silver
CDR09-ROUT-CHAN-SR

Features

- Robust steel construction
- Available as 300 mm, 600 mm, 900 mm or 1200 mm wide variant
- Adjustable rear opening
- Right side adjustable plate
- Flexible mounting at bottom or on top of the rack
- Better space utilization for cable bundle and cable routing
- Easy and fast installation
- Fixing kit included



Technical data

Mechanical data

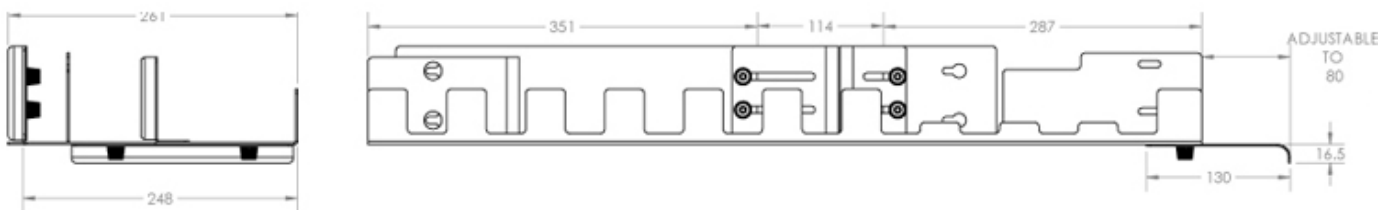
Characteristics	Values
Product family	CDR
Dimension (Width x Length x Height) (mm)	832 x 261 x 89
Dimension (Width x Length x Height) (inch)	32.8 x 10.3 x 3.5
Weight (kg)	4.9
Weight (lbs)	10.8
Material Frame	metal sheet
Colour Frame	white aluminium (RAL9006)

Environmental data

Characteristics	Values
Temperature resistance (min to max) (°C)	-46 to 81
Temperature resistance (min to max) (°F)	-50.8 to 177.8
Temperature resistance during installation term (min to max) (°C)	-46 to 81
Temperature resistance during installation term (min to max) (°F)	-50.8 to 177.8
Flammability rating	UL 94 V-0
Chemical resistance	Yes
UV resistance	Yes
Free of halogen	Yes
RoHS compliant	Yes
REACH compliant	Yes

CDR09, 2U patch cord routing channel

Technical drawing



Ordering information

Description	Item number
CDR09, 2U patch cord routing channel, silver	85029682