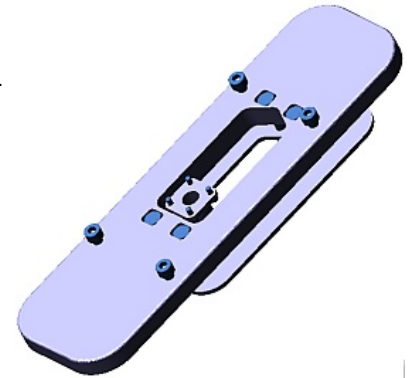


Sencity Rail antenna mounting plate 9091.99.0261

Description

Mounting plate for a Sencity Rail medium or high profile antenna.
Provides optimal mechanical stability for the antenna mounting.
Allows the antenna mounting on a metal or non-metal train roof with a thickness of 0.5 to 12 mm .
Easy mounting procedure without welding.



Technical Data

Mechanical Data

Weight	2.2 kg
Dimensions (mm)	20 x 108 x 360 (Height x Width x Depth)
Wind speed	survival: 500km/h
Material	Aluminium

Screws to mount the antennas are included.
Grounding kit type 9091.99.0235 included.

Environmental Data

IP rating	IP69
2011/65/EU (RoHS - including 2015/863 and 2017/2102)	compliant

Using this product slightly influences the performance of the antenna: Type 1399.99.0130: VSWR 2.3:1 in band 1350 - 1710 MHz, if mounted onto a large metal ground plane OK for smaller ground plane or if no ground plane is present.

Related Documents

Mounting instruction	DOC-0000756067
Painting instruction	DOC-0000256180
Security instruction	DOC-0000278984
Outline drawing1	DOU-00317385
3D-model (Step)	DOC-0000778659

Additional Information

This product is not compatible to all Sencity Rail antennas. Please check the datasheet of the antenna.

Sencity Rail antenna mounting plate 9091.99.0261

